

NO.	TENANT	ADDRESS	SQ. FT.
1	CLAWDADY'S	1601 S.E. HWY 19	4,514
2	"	"	"
3	"	"	"
4	LA CASA DI NORMA	1609 S.E. HWY 19	1,170
5	CANADA DRUGS	1611 S.E. HWY 19	825
6	CHINA INN	1613 S.E. HWY 19	825
7	AVAILABLE	1615 S.E. HWY 19	825
8	AVAILABLE	1619 S.E. HWY 19	1,300
9	AVAILABLE	1621 - 23 S.E. HWY 19	2,600
10	"	"	"
11	METROPICS	1625 S.E. HWY 19	1,281
12	DOLLAR TREE	1631 S.E. HWY 19	10,620
12-A	SWEETBAY LIQUOR	1631-A S.E. HWY 19	2,380
13	PAYDAY CASH ADVANCE	1637 S.E. HWY 19	3,364
14	OPTIMART	1661 S.E. HWY 19	1,300
15	SLENDER ELLAS	1663 S.E. HWY 19	1,300
16	JIM GREEN JEWELERS	1665 S.E. HWY 19	1,300
17	AVAILABLE	1667 S.E. HWY 19	1,257
18	SEVEN RIVERS	1669 S.E. HWY 19	5,820
19	"	"	"
20	"	"	"
21	HUNGRY HOWIES	1677 S.E. HWY 19	1,200
22	AVAILABLE	1679 S.E. HWY 19	1,200
23	FRAME DESIGN	1681 S.E. HWY 19	750
24	AVAILABLE	1683 S.E. HWY 19	750
25	AVAILABLE	1695 S.E. HWY 19	750
26	A.T. NAILS	1687 S.E. HWY 19	750
27	AAA INSURANCE	1689 S.E. HWY 19	750
28	SWEETBAY (OWNS ITS SPACE)	1691 S.E. HWY 19	40,000
TOTAL SQ. FT.			86,831
TOTAL PARKING SPACES: 416			

**SITE DATA**

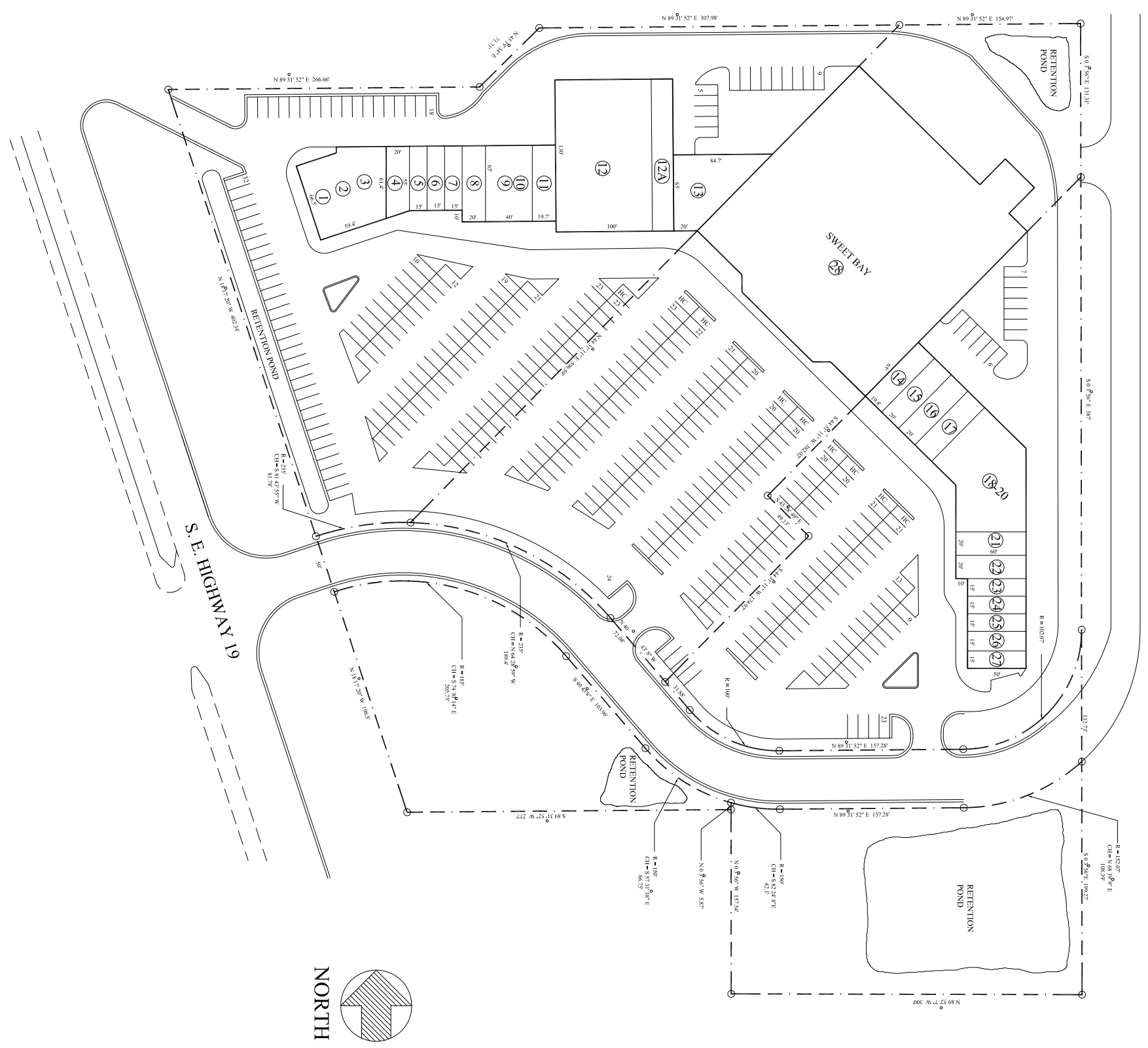
SHOPPING CENTER SITE = 6.56 ACRES

KASH-N-KARRY SITE = 3.01 ACRES

SHOPPING CENTER BUILDING AREA: FIRST FLOOR = 47,152 s.f.

KASH-N-KARRY BUILDING SITE = 41,073 s.f.

TOTAL PARKING SPACES = 462



This information show is not a representation, warranty or guarantee as to size, location or identity. Tenants, buildings, parking, ingress, and egress are subject to changes, additions and deletions as the architect, landlord or any governmental agency may direct. Any specific tenant referenced herein is shown for identification, change of location, etc., at any time without prior notice.

<p><b>CRYSTAL RIVER</b></p> <p><b>LEASE PLAN</b></p> <p>September 21, 2011</p>	<p><b>CASTO</b></p> <p>401 N. Cattlemen Road Suite #108 Sarasota, Florida 34232 Phone: (941) 552-2700 Fax: (941) 925-9562</p>
--	---